

How to Configure IP Sensors IPSW2210, IPS2222 and IPS2225 to a Local Area Network

1. Connecting IP Sensor to your PC.

Default network parameters configuration for IP Sensors:

IP address: 192.168.2.2

Network mask: 255.255.255.0

Default gateway: 192.168.2.1

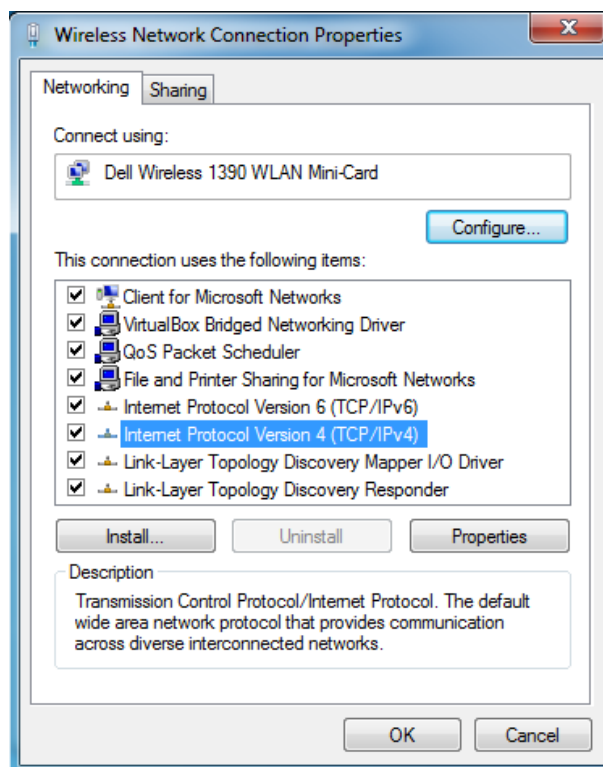
IP configuration via DHCP: Disabled

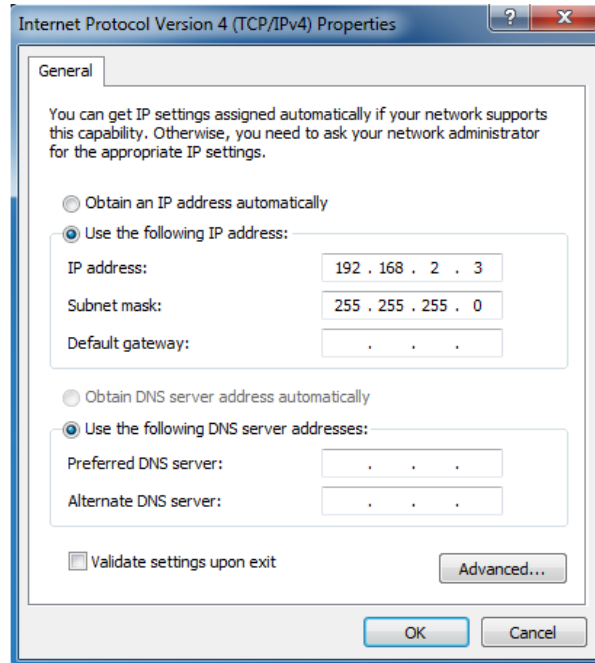
User name: admin

Password: admin

The first step is to establish communication between computer and IP Sensor. This can be done by assigning a temporary IP address to the computer.

For computers with Windows OS assigning of IP address is made in “Local area connection properties” or “Wireless Network Connection Properties”.



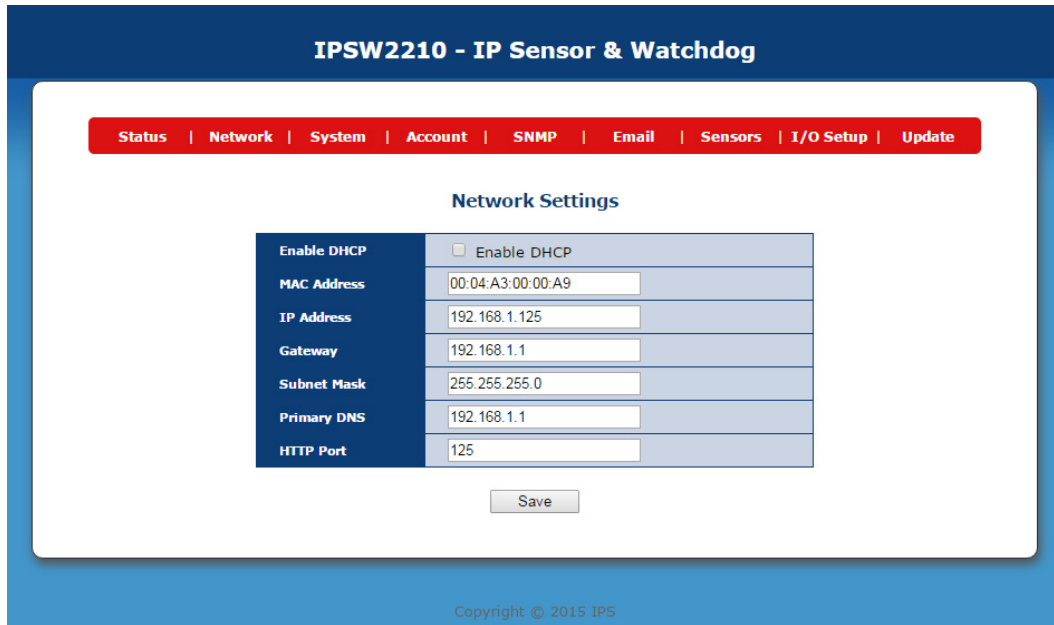


IP Address of the computer should be at the same network. For example – 192.168.2.3.
Into the browser you should type <http://192.168.2.2>. If network settings are correct the login page will appear.



2. IP Sensor Network settings.

There are two ways to set network settings for IP Sensor - automatic or manual.



The screenshot shows the web interface for 'IPSW2210 - IP Sensor & Watchdog'. At the top, there is a navigation menu with links: Status, Network, System, Account, SNMP, Email, Sensors, I/O Setup, and Update. The 'Network Settings' page is displayed, featuring a table of configuration options:

Setting	Value
Enable DHCP	<input type="checkbox"/> Enable DHCP
MAC Address	00:04:A3:00:00:A9
IP Address	192.168.1.125
Gateway	192.168.1.1
Subnet Mask	255.255.255.0
Primary DNS	192.168.1.1
HTTP Port	125

Below the table is a 'Save' button. At the bottom of the page, there is a copyright notice: 'Copyright © 2015 IPS'.

2.1. Automatic network settings.

If you check "Enable DHCP" you will use automatic setting of IP address from router.

Before doing this step download from our website free software tool for Windows PC "Ethernet Device Discoverer"

Using this tool can easily find what IP address is received your IP Sensor from router.

2.2. Manual network settings.

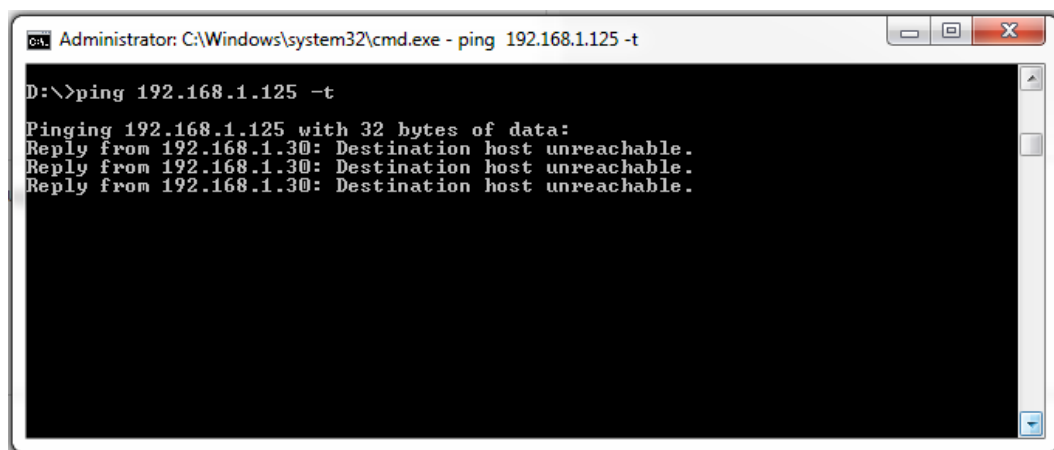
Before you make manual settings should better know your LAN settings!

2.2.1. IP address.

Enter an IP address that is not occupied by another device on your network.

Test if IP address is free before assign it to the controller.

Start Command Prompt and type: ping ip.address -t



The screenshot shows a Windows Command Prompt window titled 'Administrator: C:\Windows\system32\cmd.exe - ping 192.168.1.125 -t'. The command prompt shows the following output:

```
D:\>ping 192.168.1.125 -t
Pinging 192.168.1.125 with 32 bytes of data:
Reply from 192.168.1.30: Destination host unreachable.
Reply from 192.168.1.30: Destination host unreachable.
Reply from 192.168.1.30: Destination host unreachable.
```

2.2.2. Gateway.

The most common gateway is the internet gateway, which connects a home or enterprise network to the internet. In home network this role is executed by router.

Enter the IP address of your gateway in input tag.

2.2.3. Subnet mask.

An address code that determines the size of the network. Normally use 255.255.255.0 as the subnet mask.

2.2.4. Primary DNS

For DNS server enter the same IP address like on the router or Google DNS – 8.8.8.8.

2.2.5. HTTP port.

Default settings for this port is 80. Value of HTTP port can be changed from 80 to 65500.

3. IP Sensor connections.

Connect the IP Sensor to the 10/100 Mbit network. Use a classic TP patch cable for connection to switch, router or PC.

If the Ethernet connection is OK, the POWER and LINK indicator should light up and then LINK indicator blink according to network data transfer.